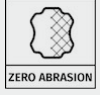


↳ PLUS



Scratch-Resistant Leather

Zero Abrasion technology uses leather finished with multiple layers of polyurethane to protect the upper from scratches, cuts, and wear. This solution ensures that the footwear maintains flawless performance and appearance even after months of intense use, providing advanced resistance against abrasive surfaces and mechanical environments—all while preserving foot comfort and breathability.



Three to be™ - Triple Density Injection

Three to Be® - Tripla Densità Iniettata technology represents one of the most advanced results of our R&D efforts. Patented by Giasco, it integrates three entirely polyurethane-injected sole layers to optimize safety shoe performance in terms of comfort, stability, and slip resistance.



Anti-Torsion Sole

The Anti Torsion system uses a thermoplastic shank designed to increase stability on irregular and wet surfaces. Unlike standard shanks, it flexes with the foot's natural motion, reducing the risk of twists and falls. Ideal for outdoor work, especially in construction, where surface control is critical.



Memory Foam Insole

The MEMORY FOAM insole offers superb comfort thanks to its innovative material, which adapts to foot shape. It enhances walking comfort, supports posture, improves fit, and distributes body weight. Additionally, it stabilizes the foot and absorbs ground impact, serving as an excellent shock absorber.

↳ SOLE

3HYBRID Cushioning

3Hybrid is a line that, thanks to the sole design, ensures maximum shock absorption and energy return throughout the entire lifespan of the safety footwear. These high cushioning properties are provided on one hand by the special low-density, ultra-soft compounds and on the other by a three-dimensional lateral design that maximizes the sole's elasticity. Also on the side of the work shoe, there is a spoiler designed to provide greater foot stability and firmness, thus maximizing protection. Lastly, this safety shoe features a tread with a specific lug pattern designed to offer excellent slip resistance for indoor and light outdoor environments.

