

3PU PATENTED

ARUBA S3L FO SR

3H192EV

CE EN ISO 20345:2022 S3L FO SR ESD

LOW SAFETY SHOE

36-47

3HYBRID Cushioning

Low safety shoe, perspiring and abrasion resistant technical fabric and WPA anti-scratch back leather thickness 1,8-2,0 mm.

Highly perspiring and abrasion resistant fabric lining.

Shoe with refracting fabric insert.

Soft, lined and padded tongue.

COMPLETELY METAL FREE SHOE

TOECAP 200J polymeric composite **non-thermic** according to EN 22568

PL MIDSOLE flexible antiperforation composite fabric according to EN 22568

SOLE 3HYBRID three-densities polyurethane antistatic, resistant to hydrolysis ISO 5423:92, to hydrocarbons and to abrasion, anti-shock and anti-slipping

ANTI TORSION insert in the sole to assure stability on uneven ground

MEMORY INSOLE three-materials extra comfort insole, with soft latex Memory cushion, ensuring no stress in heel zone and resistant to body pressure.

Perspiring, removable, anatomic, absorbing, antistatic and anti-bacterial and ESD.

Footwear meets the requirement in accordance with IEC 61340-4-3:2017 (IEC 61340-5-1:2016) for electrical resistance ESD.

FO sole resistance to hydrocarbons

SR slip resistance

Size 36-47 Shoe weight Sz 42 gr. 490



→ **AREAS OF APPLICATION**

- Logistics and Light Industry
- Automotive Components
- Metal and Wood Carpentry
- ESD Area

→ **CERTIFICATIONS APPLIED**

- Water Penetration and Absorption (WPA)
- PL Puncture Resistance with Non-Metallic Insert (nail Ø 4.5mm)
- Slip Resistance (mandatory ceramic-Nals test)
- Antistatic Footwear
- Heel Energy Absorption
- Hydrocarbon Resistance

→ **TECHNOLOGIES AND MATERIALS**

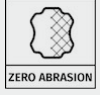
- No metal
- Cordura®
- ESD - Electrostatic Discharge
- Metal-Free
- High Visibility
- Mondo Point 11
- Extreme Lightness
- Scratch-Resistant Leather
- Slip Resistance (optional glycerin test)
- Technical Fabric
- Three to be™ - Triple Density Injection
- Anti-Torsion Sole
- Memory Foam Insole

→ **ANTI-SLIP RESULTS**

*after simulation of walking by slight abrasion

Ceramic tile floor with NaLS	Forward Heel (heel slip 7°)	Backward heel (heel slip 7°)	Ceramic tile floor with glycerin	Forward Heel (heel slip 7°)	Backward heel (heel slip 7°)
	≥ 0.31 ≥ 0.47	≥ 0.36 ≥ 0.44		≥ 0.19 ≥ 0.23	≥ 0.22 ≥ 0.25

↳ PLUS



Scratch-Resistant Leather

Zero Abrasion technology uses leather finished with multiple layers of polyurethane to protect the upper from scratches, cuts, and wear. This solution ensures that the footwear maintains flawless performance and appearance even after months of intense use, providing advanced resistance against abrasive surfaces and mechanical environments—all while preserving foot comfort and breathability.



Three to be™ - Triple Density Injection

Three to Be® - Tripla Densità Iniettata technology represents one of the most advanced results of our R&D efforts. Patented by Giasco, it integrates three entirely polyurethane-injected sole layers to optimize safety shoe performance in terms of comfort, stability, and slip resistance.



Anti-Torsion Sole

The Anti Torsion system uses a thermoplastic shank designed to increase stability on irregular and wet surfaces. Unlike standard shanks, it flexes with the foot's natural motion, reducing the risk of twists and falls. Ideal for outdoor work, especially in construction, where surface control is critical.



Memory Foam Insole

The MEMORY FOAM insole offers superb comfort thanks to its innovative material, which adapts to foot shape. It enhances walking comfort, supports posture, improves fit, and distributes body weight. Additionally, it stabilizes the foot and absorbs ground impact, serving as an excellent shock absorber.

↳ SOLE

3HYBRID Cushioning

3Hybrid is a line that, thanks to the sole design, ensures maximum shock absorption and energy return throughout the entire lifespan of the safety footwear. These high cushioning properties are provided on one hand by the special low-density, ultra-soft compounds and on the other by a three-dimensional lateral design that maximizes the sole's elasticity. Also on the side of the work shoe, there is a spoiler designed to provide greater foot stability and firmness, thus maximizing protection. Lastly, this safety shoe features a tread with a specific lug pattern designed to offer excellent slip resistance for indoor and light outdoor environments.

