

3PU PATENTED



HIMALAYA S7L FO CI SR

3C178E

CE EN ISO 20345:2022 S7L FO CI SR

SAFETY BOOT

39-47

3CROSS Stability

Calf safety boot, WPA anti-scratch back leather thickness 1,8-2,0 mm. Soft, Windtex® water resistant membrane lining, with very good perspiration and abrasion resistance.

Shoe with refracting fabric insert.

Soft, lined and padded tongue.

TOECAP 200J polymeric **composite non-thermic** according to EN 22568

PL MIDSOLE flexible anti-perforation composite fabric according to EN 22568

SOLE 3CROSS three-densities polyurethane antistatic, resistant to hydrolysis ISO 5423:92, to hydrocarbons and to abrasion, anti-shock and anti-slipping

ANTITORSION insert in the sole to assure stability on uneven ground

Extra comfort trimaterial insole with soft Memory PU foam cushion in the heel and resistant to body pressure.

Perspiring, removable, anatomic, absorbing, antistatic and antibacterial

FO sole resistance to hydrocarbons

CI insulating bottom against cold -17 °F C

WR water resistant footwear

SR Resistance to slipping

Boot sole height including 23 cm

Size 39-47 Shoe weight Sz 42 gr. 665* *The calculated weight excludes laces and insoles.*



AREAS OF APPLICATION

- Farming and Agriculture
- Cold Environments
- Construction and Building Sites
- Hydrocarbons and Chemicals

CERTIFICATIONS APPLIED

- Water Penetration and Absorption (WPA)
- PL Puncture Resistance with Non-Metallic Insert (nail Ø 4.5mm)
- Slip Resistance (mandatory ceramic-Nals test)
- Antistatic Footwear
- Heel Energy Absorption
- Hydrocarbon Resistance
- Water-Repellent Footwear
- DGUV 112-191

TECHNOLOGIES AND MATERIALS

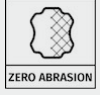
- No metal
- High Visibility
- Mondo Point 11
- Cold Insulating Outsole
- Scratch-Resistant Leather
- Slip Resistance (optional glycerin test)
- Three to be™ - Triple Density Injection
- Anti-Torsion Sole
- Memory Foam Insole

ANTI-SLIP RESULTS

*after simulation of walking by slight abrasion

Ceramic tile floor with NaLS	Forward Heel (heel slip 7°)	Backward heel (heel slip 7°)	Ceramic tile floor with glycerin	Forward Heel (heel slip 7°)	Backward heel (heel slip 7°)
	≥ 0.31 ≥ 0.38	≥ 0.36 ≥ 0.49		≥ 0.19 ≥ 0.22	≥ 0.22 ≥ 0.23

↳ PLUS



Scratch-Resistant Leather

Zero Abrasion technology uses leather finished with multiple layers of polyurethane to protect the upper from scratches, cuts, and wear. This solution ensures that the footwear maintains flawless performance and appearance even after months of intense use, providing advanced resistance against abrasive surfaces and mechanical environments—all while preserving foot comfort and breathability.



Three to be™ - Triple Density Injection

Three to Be® - Tripla Densità Iniettata technology represents one of the most advanced results of our R&D efforts. Patented by Giasco, it integrates three entirely polyurethane-injected sole layers to optimize safety shoe performance in terms of comfort, stability, and slip resistance.



Anti-Torsion Sole

The Anti Torsion system uses a thermoplastic shank designed to increase stability on irregular and wet surfaces. Unlike standard shanks, it flexes with the foot's natural motion, reducing the risk of twists and falls. Ideal for outdoor work, especially in construction, where surface control is critical.



Memory Foam Insole

The MEMORY FOAM insole offers superb comfort thanks to its innovative material, which adapts to foot shape. It enhances walking comfort, supports posture, improves fit, and distributes body weight. Additionally, it stabilizes the foot and absorbs ground impact, serving as an excellent shock absorber.

↳ SOLE

3CROSS Stability

3Cross is a squared line with a dynamic and tenacious character, designed for workers operating in outdoor environments with uneven surfaces. Specifically, the sole has been designed with a rather high rear section to ensure maximum softness and comfort for the foot on the roughest terrain. On the sides, the sole features a stabilizing ring to provide maximum stability for the safety shoe in all operating conditions. Finally, the sole includes a self-cleaning tread with deep lugs, designed to anchor to the ground and ensure maximum grip on irregular surfaces.

