



# EDISON SB FO E PS CI HI WPA HRO SR

HRD060D

CE EN ISO 20345:2022 SB FO E PS CI HI WPA HRO SR

**ANKLE SAFETY SHOE**

**37-48**

**DIELECTRIC** Sole line

High safety shoe, WPA back leather and heel in anti-scratch leather thickness 1,8-2,0 mm, with refracting fabric insert.

Perspiring and abrasion resistant fabric lining.

Soft, lined and padded tongue.

**COMPLETELY METAL FREE SHOE**

**TOECAP 200J** polymeric composite **non-thermic** according to EN 22568

**PS MIDSOLE fabric INSULATION composite flexible anti-perforation** according to EN 22568

**SOLE HARD ROCK INSULATING** bidensity polyurethane and **INSULATING RUBBER** resistant to hydrocarbons and to abrasion, anti-shock and anti-slipping Article HRD060D has been tested using a method analogous to ASTM F2413-24 (EH) and CSA Z195-14: determination of resistance to an electric shock, increase 1 kV/sec, voltage 20,000 V/60 Hz  $\square$  holding the voltage for 1 minute. Electrical current requirement below 1.0 mA.

The outsole of the footwear, within specific limits (in the absence of moisture, not referring to the upper), was tested using a method analogous to EN ISO 20345:2022 to provide electrical insulation against voltages up to 1000 V  $\square$  M ohm >1000.

(Test report No. 4351088/E)

**DIELECTRIC INSOLE** bimaterial extracomfort with activated carbon, breathable, removable, anatomical, absorbent, insulating and antibacterial.

Environmentally Sustainable Eco-Friendly

**FO** sole resistance to hydrocarbons

**E** energy absorption on seat region

**PS** sole resistance to perforation non metallic (nail  $\varnothing$ 3,0mm)

**CI** cold insulation of sole complex -17°C

**HI** heat insulation of sole complex

**HRO** resistance to hot contact of the outsole

**SR** sole resistance against slipping

**THIS PRODUCT COMPLIES WITH THE REQUIREMENTS OF THE STANDARD ASTM F2413-24:**

- Impact resistant footwear (I)
- Compression resistant footwear (C)
- Puncture Resistant Footwear (PR)
- Electric Hazard Resistant Footwear (EH)
- Slip Resistance (SRO)

**Size** 37-48 **Shoe weight** Sz 42 **gr. 625**

\* The calculated weight excludes laces and insoles.

## AREAS OF APPLICATION

Cold Environments

Electrician

## CERTIFICATIONS APPLIED



Water Penetration and Absorption (WPA)



PS Puncture Resistance with Non-Metallic Insert (nail  $\varnothing$  3.0mm)



Slip Resistance (mandatory ceramic-Nals test)



ASTM F2413-24



Heel Energy Absorption



Hydrocarbon Resistance



Heat-Resistant Sole 300°C Contact



Heat Insulating Outsole



Insulation up to 20,000V

## TECHNOLOGIES AND MATERIALS



No metal



Metal-Free



High Visibility



Mondo Point 11



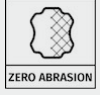
Cold Insulating Outsole



Scratch-Resistant Leather



Slip Resistance (optional glycerin test)



### Scratch-Resistant Leather

Zero Abrasion technology uses leather finished with multiple layers of polyurethane to protect the upper from scratches, cuts, and wear. This solution ensures that the footwear maintains flawless performance and appearance even after months of intense use, providing advanced resistance against abrasive surfaces and mechanical environments—all while preserving foot comfort and breathability.

### DIELECTRIC Sole line

Dielectric sole line was developed to meet the needs of those working in contact with electrical cables and systems. Specifically, this line offers a safety shoe with an insulating sole that provides specific protection against the risk of electric shock.

This is made possible by a series of insulating materials specifically designed for this purpose: the nitrile rubber compound of the outsole, the polyurethane foam of the midsole, the fabrics of the puncture-resistant insole, and the compound of the internal footbed.

These technologies enabled the shoes to pass electrical resistance tests in accordance with the analogous method of the EN ISO 20344:2021 standard and ASTM F2413 (EH) / CSA Z195-14 at 20 kV/60 Hz.

In addition, the specific materials used in the sole construction allowed the product to obtain the important American certification ASTM 2413-24 EH (Electric Hazard Resistant Footwear).

